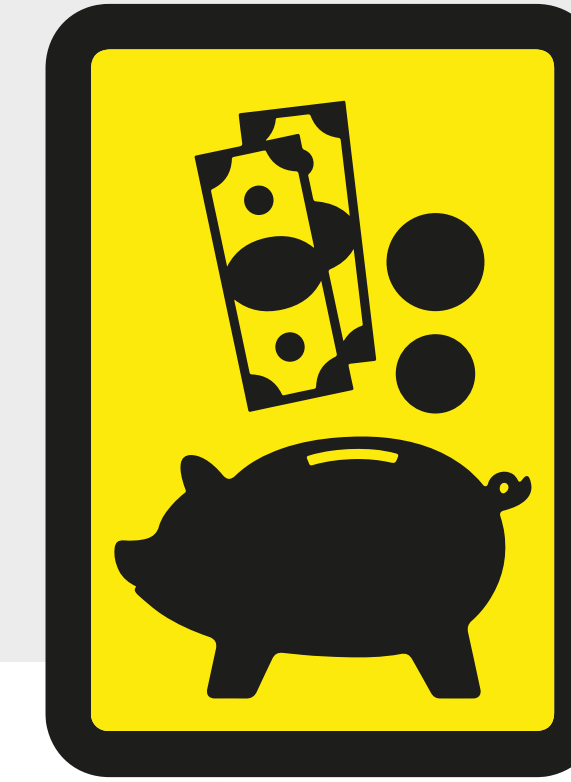


ELDER ABUSE:

SPOTTING THE SIGNS



FINANCIAL ABUSE

- Basic needs not met
- Bills not paid
- New credit cards and increased cash withdrawals
- Unusual purchases by caregiver



ABANDONMENT

- Desertion of responsibility from care givers
- Wilful refusal of care



ISOLATION

- Prevention from receiving post, phone calls, visitors etc.

PHYSICAL ABUSE



- Bruises, black eyes, cuts, sprains
- Sudden change in behaviour
- Caregiver refusal to leave dependant alone



MENTAL ABUSE

- Threatening physical harm
- Derogatory & inappropriate names
- Insults, profanity, ridicule, harassment, coercion, intimidation, humiliation

NEGLECT OF SELF OR BY OTHERS



- Lack of adequate food and water
- Dirty clothing and changes in personal hygiene
- Unusually messy home
- Lack of medical aids or medication



SEXUAL ABUSE

- Unusual bruising on thighs and chest
- Unexplained STIs
- Unusual stains on clothing or sheets
- Withdrawn from social interactions
- Panic attacks